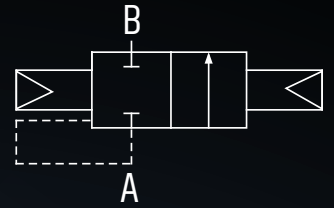


INOX IHP
ABOUT USING WATER



VRT

Pre-filling Valve
Oil Actuated



VRT

General features

- Equipped with two proximity switches
- Metal-to-metal seal
- Compact design

Options

- Interface for existing cylinders
- Special flange

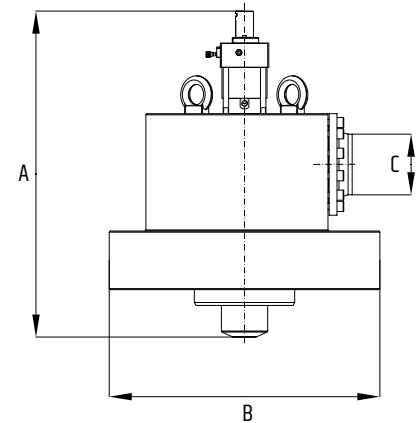
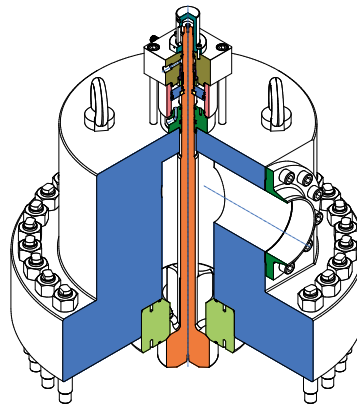
Applications

- Designed to be used in hydraulic testing

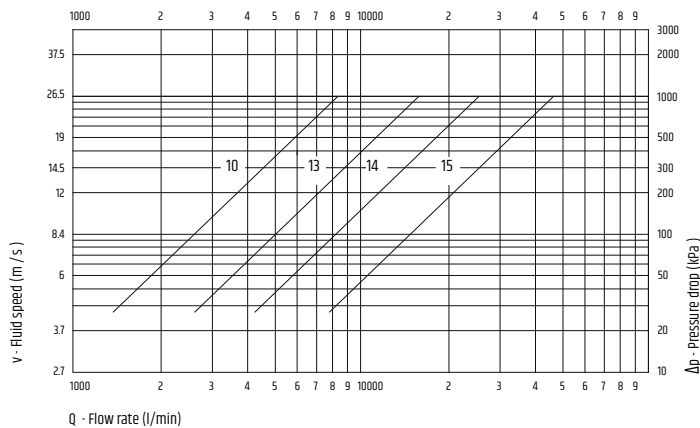
Technical data

Fluid: Water and HFA
Working pressure: Up to 35 MPa
Ambient temperature: +2°C ÷ +60°C
Connections: UNI
Materials: Body in carbon steel

INOXIHP	A	B	C
10	837	500	DN80 PN1500
13	787	447.5	DN150 PN500
14	1490	1200	DN200 PN1500
15	1400	772.5	DN250 PN500



Selection diagram



Valves sizes

INOXIHP	ND	inches
10	80	3"
11	100	4"
12	125	5"
13	150	6"
14	200	8"
15	250	10"



INOXIHP S.r.l.
 IT - 20834 Nova Milanese (MB) - Via Garibaldi, 89
 Tel: +39 0362 190111 - E-mail: inoxihp@inoxihp.com - inoxihp.com

INOXIHP
 ABOUT USING WATER